



Hadlow
Primary School

Happiness, Progress, Success

Year Six: Rowan Class

Meet The Teacher





Meet the Year Six Team!



Mr Gilder



Mrs Hardcastle



Mrs Doyle

Arrivals and Dismissals



Arrival: From 08:45-09:00

Please walk your child swiftly through the gate and to the stairs. Encourage their independence and also allow them to walk straight into the class. This will also help to ease congestion!

End of the Day: 15:25

The children will be leaving school through the Rowan classroom door at the end of the day. The adults in Rowan Class will be available at this time to help with any questions or queries, but it is preferred you make an appointment through the class e-mail.

Contact



Contact:

Regular messages should be sent through the class email (rowanclass@hadlow.kent.sch.uk) and your message will be responded to as soon as possible.

Urgent messages should be arranged by telephone or email to the school office, or passed on directly to Miss Chapman or Mrs. Vanns, who will be on the gate.

Your Year Ahead (a snapshot!)

Term 1	11+ (11th September); Conservation, Ice Trap, Polar Bears, Climate Change, The Lorax, Big Build Project School Ambassadors, Habitats, India, Swimming
Term 2	World War 1 and World War 2, Trenches Visit/Trip Class Museum, Evolution, British Classics
Term 3	Science Fair! Stories from other cultures, Conservation Gaming, Trips and Treats Meeting
Term 4	Myths, Legends and Fairy Tales; Greek Murder Mystery, Tales of Odysseus, Pottery, Illustrations
Term 5	SATs - 11th-14th May 2025 Natures Treasures, Where the World Turns Wild
Term 6	Trips and Treats; Residential; London School Production; Memory Books, Year 7 Transition!

***A Year in
Rowan Class!***



Rowan Class Timetable - Term 1

Date/Time	Monday	Tuesday	Wednesday	Thursday	Friday
Notes	Swimming Kit	PE Kit			
EMA/Register 08:45-09:05	EMA (Maths)	EMA (PSHE)	EMA (GPS)	EMA (Science)	EMA (Reading Cafe)
Morning 1 09:05-09:15	EMA (Maths)	PSHE 09:00-09:30 Maths 09:30-10:30	EMA (GPS)	Maths	EMA (Reading Cafe)
Morning 1 09:15-09:30	Monday Assembly		Singing Assembly		Achievement Assembly
Morning 2 09:30-10:30	PE - Swimming		Maths		Maths
Morning 3 10:30-11:00	PE - Swimming	Guided Reading	Guided Reading	Guided Reading	Guided Reading
Break (15 mins)					
Morning 3 11:15-12:35	English (11:35-12:35)	Handwriting (15 mins) English	Spelling (15 mins) English	Handwriting (15 mins) English	Spelling (15 mins) English
Lunch (50 mins)					
Afternoon 1 13:25-14:15	Maths	French	RE	Music	Guided Reading
Afternoon 2 14:15-15:15	Geography	PE - Pure Sports	Art	Science	Computing
Afternoon 3 15:15-15:25			Memory Maths	GPS	Reading for Pleasure
Reading/Home 15:25-					

Rules and Values



School Rules:

Make Good Choices
Show Respect and Kindness
Do Your Best



Questions?



Behaviour Blueprint



Step One	Positive reminder/reinforcement	Remind the child that you have faith in them and their abilities. Smile at them. Make them feel valued.
Step Two	De-escalation	Sit and support the child/ Provide further challenge/ Swap their seat/ Give them a job to complete
Step Three	Quiet, supportive chat	Take the child outside/to one side where they are not shamed in front of the class. Tell them that you care about them and their learning and you want to help them to do their best. Discuss ways forward.
Step Four	Reflection Time	Child to sit outside the classroom and reflect on their behaviour (Written reflection for KS2) Have you made good choices? Have you shown care and kindness? Have you tried your best? Time missed out of class will be made up during the following break/lunch time.
Step Five	Communication with Parents	Arrange a same-day phone call or meeting when behaviour continues/ a serious offence happens Following this, a consequence will be shared and discussed with parents.

Parents as Partners—Safeguarding



- Please try and keep consistent attendance—missing even a day can impact a child's whole week.
- Make sure your child gets a good night's sleep. One hour before bedtime:
 - Remove the power cable from game consoles
 - Remove tablets/iPads/phones from the room
- Research shows this has a negative impact on behaviour, progress, achievement and wellbeing (please consider removing age-appropriate video games/films like GTA (Grand Theft Auto) or vulgar adult humour.



Parents as Partners—Safeguarding



- Keep them safe online.
 - Become familiar with what your child can access with the app/game/device—many are designed to be addictive.
 - Be aware of age limits. Encourage them to show you which apps they use.
 - Role model safe online behaviour! No negative comments about the school/staff online. This will be reported and logged and you will be held to account.
- If you have any worries about your child's health or wellbeing, speak to us immediately.



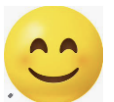
Parents as Partners—Role Models



“The way we speak to children, becomes their inner voice.”



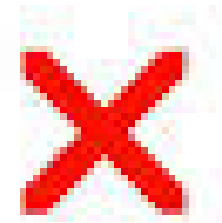
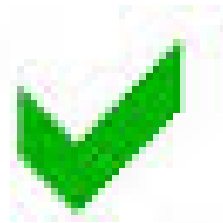
- Always model kindness and respect when talking to the adults.
 - (Never speak negatively about the school or adults in front of your child—this can cause them to act out and can affect their wellbeing).
- If you have a problem, come and speak to us!
 - We will always investigate and follow up.
 - If something happens in school, leave it to us!
- Tell us what we are doing well too!



Parents as Partners—Pack Lunches



- We are aware some children find it difficult to eat healthy. Please provide healthy food options for your child.



Parents as Partners—Home Learning



- Support your children with *reading*—this is the most important area of the curriculum, as it affects all others.
Please make this a routine: 5x/week. We will be monitoring this.
- Support your children with *home learning*—show them you care!
- Support your child with *spelling practise*—this is one of the biggest barriers to writing achievement in our school.

ALL research shows that parental partnership = improved wellbeing and outcomes for children. One childhood. One chance!



Parents as Partners—Celebrate Success!

- At the end of each school day, put your phones away and ask your child how their day was! There is an opportunity to praise and celebrate every single day.
- Attend all special events in school, celebrate your child and their success.
- Attend all Child Learning Reviews and Information Evenings—If you show your child you value their learning, they will too!



Equipment



Please make sure your children are equipped every day with...

- Water Bottle
- Book Bag (no Rucksacks)
- A blue school jumper
- A coat in cold weather (rainproof?)
- A full PE kit
- Suitable footwear including wellies for wet days (no trainers, sandals or boots)
- Sun cream and hats in hot weather

There is no need for children to bring in their own stationery- this is provided for them.

*All uniform **MUST** be named.*

Key Information—Uniform



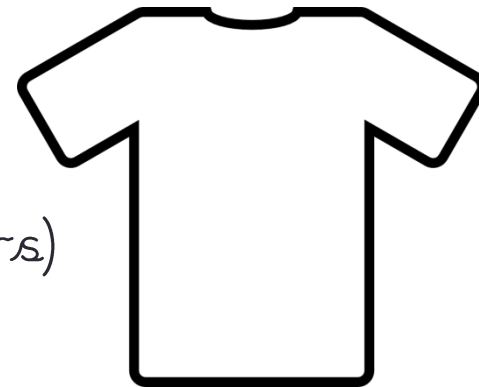
- Blue tartan pinafores (years R-6) or skirts (years 5 and 6 only) if they wish.



- Grey skirts should be mid-grey only, not black or charcoal grey. The style should allow free movement and no shorter than the top of the kneecap.

Key Information PE Kit

- Indoor: Shorts and/or tracksuit bottoms in black or **navy blue**, white T-shirt, plimsolls or trainers (children may do indoor PE in bare feet)
- Outdoor: Plain shorts and/or tracksuit bottoms in black or **navy blue**, sweatshirt in black or **navy blue**, white T-shirt, trainers (preferred) or plimsolls. Sun hats encouraged during the summer months
- An additional white vest top may be worn under the PE t-shirt (both indoors and outdoors) if desired for modesty



Key Information PE Days



This year we are again very lucky to have funding towards our PE curriculum. A specialist coach will join each class once a week to teach key outdoor skills. This will be in addition to a PE session each week led by Mr Gilder

PE Days

Monday (Mr Gilder)

Tuesday (Pure Sport)



- All jewellery **MUST** be removed
- All children **MUST** participate in PE- it is a curriculum requirement
- **All PE kit items MUST be named**
- Records will be kept when children do not have appropriate kit in school

Key Information—Equipment

- Full school uniform
- Smart school shoes
- Named water bottle (avoid disposable bottles)
- Named book bag (no Rucksacks)
- A waterproof coat
- A full PE kit
- Wellies for wet days
- Hats/scarves/gloves for cold days
- Sun cream and hats for hot days
- No extra stationary (i.e. Smiggle accessories- these will be taken away)

